

## Key Investor Information

*This document provides you with key investor information about this Fund. It is not marketing material. The information is required by law to help you understand the nature and the risks of investing in this Fund. You are advised to read it so you can make an informed decision about whether to invest.*

### EURO EQUITY INDEX TRACKING SUB-FUND

Share Class DC1 LU0129301510

A sub-fund of Universe, The CMI Global Network Fund ("The Fund")

The Fund is managed by Lemanik Asset Management S.A.

### Objectives and Investment Policy

#### Investment objective

The Sub-fund aims to increase the value of your investment over the long term.

The Sub-fund intends to replicate the benchmark index by holding the equity securities, which make up the the benchmark index, in similar proportions to the benchmark.

#### Investment policy

The Sub-fund normally invests mainly in a diversified portfolio of shares of companies that are included in the Euro Stoxx 50 Index.

The Sub-fund may use Derivatives for efficient portfolio management, to manage risks or to seek investment gains.

**Share class currency:** EUR

#### Designed for

Investors who understand the Sub-fund's risks and who plan to leave their money in for at least 5 years.

#### Terms to understand

- **Shares** : securities that represent an ownership stake in a company.
- **Euro Stoxx 50 Index** An index of 50 large Eurozone companies.
- **Derivatives** : financial instruments whose value is linked to one or more rates, indexes, share prices or other values.

You may redeem shares of the Sub-fund on any business day in both Luxembourg and the UK.

The Sub-fund distributes a dividend equal to 100% of the reportable income.

### Risk and Reward Profile

◀ Lower risk			Higher risk ▶			
Typically lower rewards			Typically higher rewards			
1	2	3	4	5	6	7

The risk category shown is based on historical data and may not be a reliable indication of the future risk profile of the Sub-fund.

The risk category shown is not guaranteed and may change over time. The lowest category does not mean risk-free investment.

The Sub-fund's risk level reflects the following:

- As a category, stocks are more volatile than both money market investments and bonds.

The Sub-fund also bears the following risks that are not adequately covered by the synthetic risk indicator :

- **Counterparty risk** : the Sub-fund could lose money if an entity with which it does business becomes unwilling or unable to honour its obligations to the fund.
- **Derivatives risk** : certain Derivatives could behave unexpectedly or could expose the fund to losses that are significantly greater than the cost of the derivative.
- **Liquidity risk** : certain securities could become hard to value, or to sell at a desired time and price.
- **Index risk** : as a tracker fund, the Sub-fund will not take steps to reduce volatility under any circumstances.
- **Index Tracking risk** : the performance of the Sub-fund may not match the performance of the index it tracks because of fees and expenses and market opening times.

## Charges

The charges you pay are used to pay the costs of running the Fund, including the costs of marketing and distribution. These charges reduce the potential growth of your investment.

One-off charges taken before or after you invest	
Entry charge*	8.50%
Exit charge	0.00%
This is the maximum that might be taken out of your money before it is invested or before the proceeds of your investment are paid out.	
Charges taken from the Fund over a year	
Ongoing charges**	0.27%
Charges taken from the Fund under certain specific conditions	
Performance Fee	0.00%

Ongoing charges are based on figures for the Sub-fund year ended 30

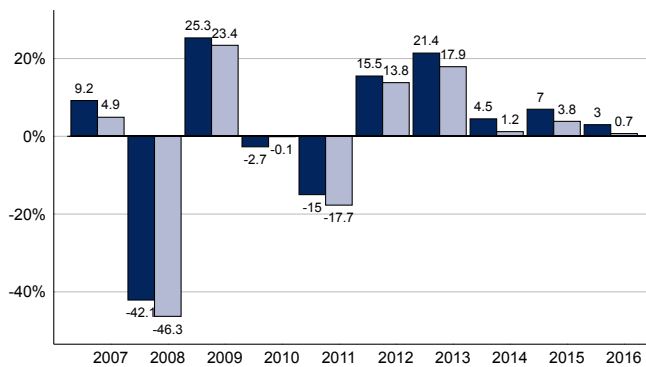
September 2016.

This figure may vary from year to year. It excludes portfolio transaction costs, except in the case of an entry/exit charge paid by the Sub-fund when buying or selling units/shares in another collective investment undertaking.

For more information about charges, please refer to section 'Charges and Expenses' of the Fund's most recent prospectus, available at [www.clerical-medical.com](http://www.clerical-medical.com).

- \*Entry charges - 2% will be charged by CMIG, the Global Distributor of the Fund. An additional maximum of 6.5% (8.5% in total) may be charged by your financial advisor.
- \*\*Ongoing charges offset by revenue received from the CMI securities lending programme.

## Past Performance



■ EURO EQUITY INDEX TRACKING SUB-FUND - DC1  
 ■ Euro Stoxx 50 Index

Past performance is not a reliable guide to future performance.

The performance shown include ongoing charges taken from the Sub-fund but do not include any applicable entry charges that you might have to pay.

Past performance has been calculated in EUR.

The Sub-fund was launched on 1 June 1999.

The Share class was launched on 1 April 2002.

## Practical Information

Custodian: RBC Investor Services Bank S.A., Luxembourg.

The Fund is structured as an umbrella fund with several sub-funds. The assets and liabilities of each Sub-fund are segregated by law. As a result, the rights of investors or creditors in relation to any one Sub-fund are restricted to the assets of that Sub-fund. This Key Investor Information document refers to a specific sub-fund and share-class of the Fund.

The most recent share prices, the Fund's most recent prospectus, annual and semi-annual reports can be obtained in the language of this document free of charge on [www.clericalmedical.com](http://www.clericalmedical.com) or from Lemanik Asset Management S.A., 106, route d'Arlon, L-8210 Mamer, Luxembourg.

You can place an order to buy, sell or switch shares directly with the Administrator (RBC Investor Services Bank S.A., 14 Porte de France, L-4360 Esch-sur-Alzette, Luxembourg). Further information on switching shares to other share classes is set out in the section 'Switching' in the Fund's prospectus.

Lemanik Asset Management S.A. may be held liable solely on the basis of any statement contained in this document that is misleading, inaccurate or inconsistent with the relevant parts of the Prospectus for the Fund.

A paper copy of the up-to-date remuneration policy of the Management Company, including, but not limited to, a description of how remuneration and benefits are calculated, and the persons responsible for awarding the remuneration and benefits, is available free of charge upon request. A detailed description of the policy is also available at [www.lemanikgroup.com/management-company-service\\_substance\\_governance.cfm](http://www.lemanikgroup.com/management-company-service_substance_governance.cfm).

The Fund and Lemanik Asset Management S.A. are authorised in the Grand-Duchy of Luxembourg and regulated by the local supervisory authority, the Commission de Surveillance du Secteur Financier (CSSF). The Luxembourg tax legislation may have an impact on your personal tax position, for further details, you should contact a tax advisor.